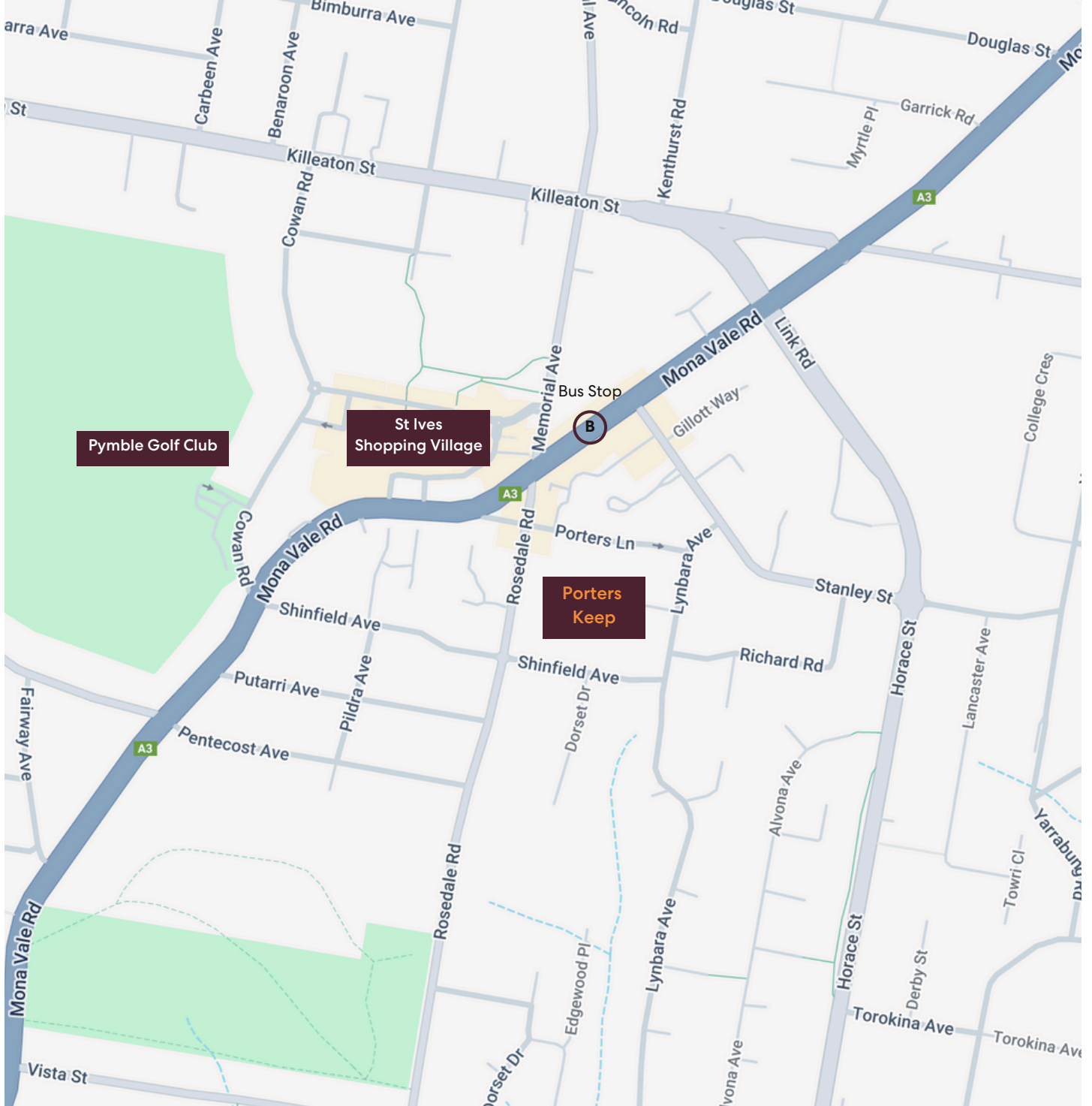


# 9 Porters Lane St Ives

Now selling  
off the plan



**Porters Keep**



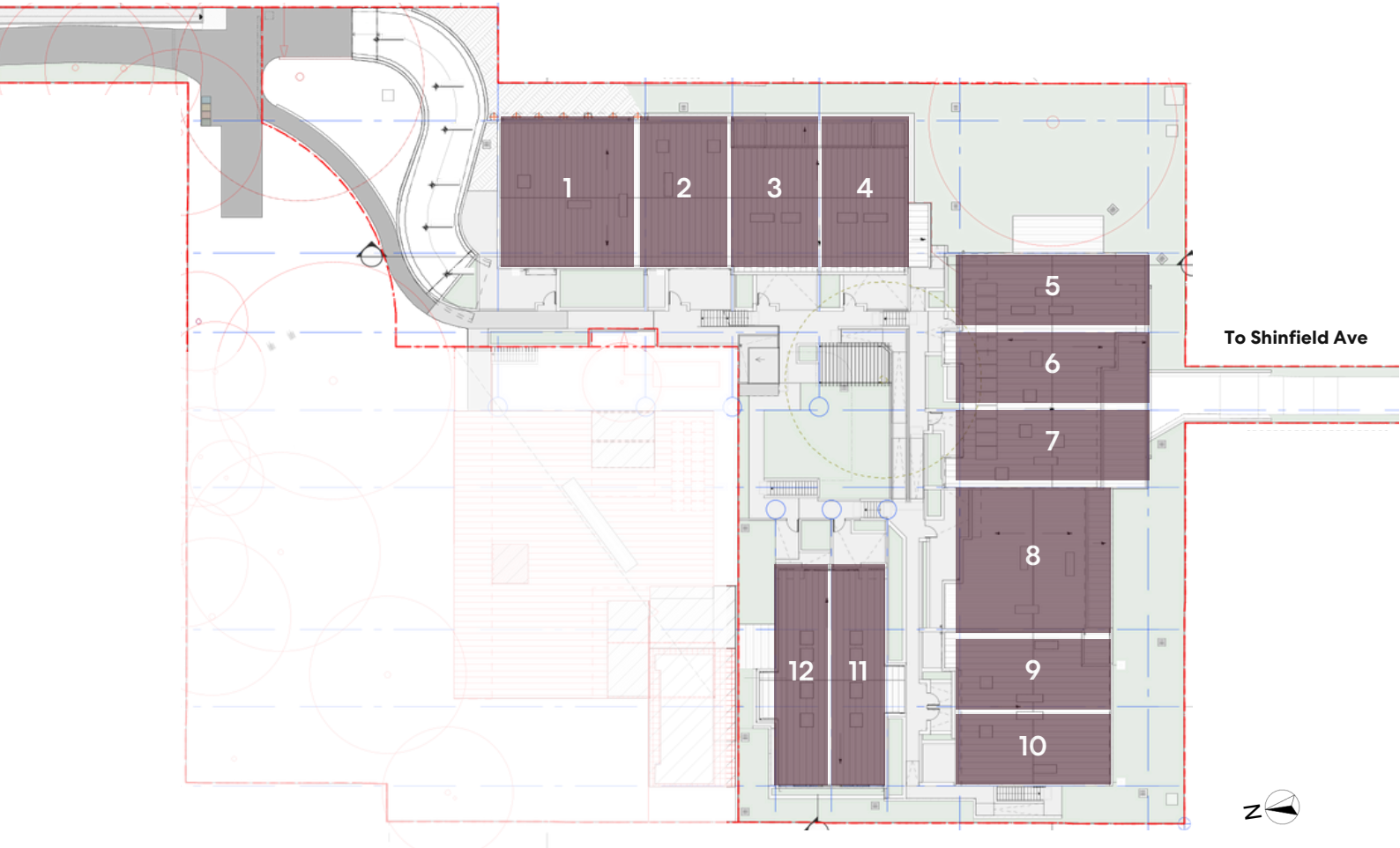
Perfectly suited for senior living, this residence is nestled in a peaceful location within walking distance of shops and public transport, ensuring convenience and tranquility.

Secure entry electronic gates adds to this prestigious development as well as generous living spaces with high end finishes and features. Air-conditioning, double lock up garages, and visitor parking.



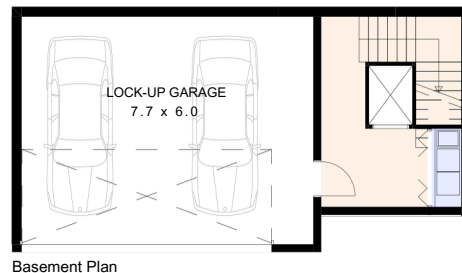
These 12 Luxurious Villas and Townhouses are due for completion in September 2026

To Porters Lane



Unit overlays are approximate

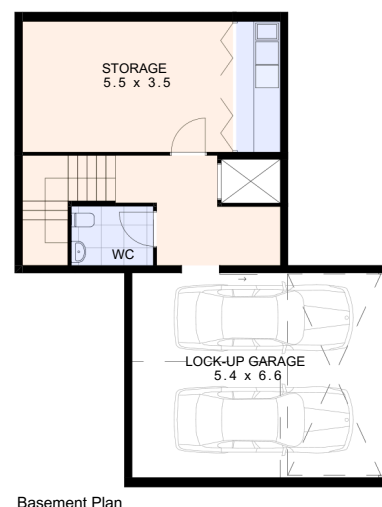
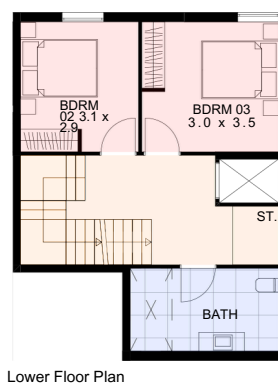
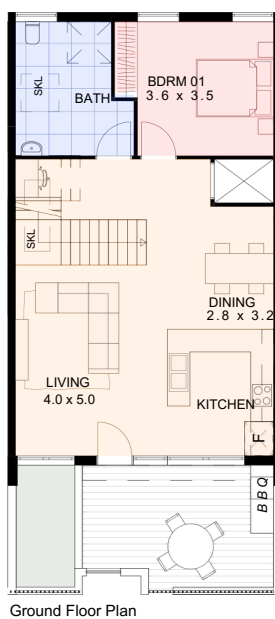
## Floor Plan | Unit 1



### Floor Plan Unit 01:

- 3 bedroom
- Unit Area: 189.8m<sup>2</sup>
  - Ground Floor: 124.00m<sup>2</sup>
  - Basement Floor: 65.80m<sup>2</sup>
- Courtyard Area: 73.70m<sup>2</sup>
- 2 car space

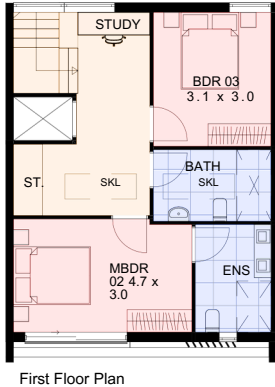
## Floor Plan | Unit 2



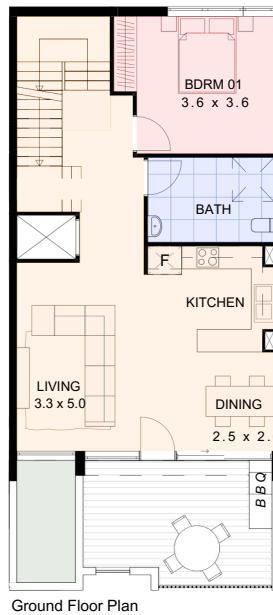
### Floor Plan Unit 02:

- 3 bedroom
- Unit Area: 172.4m<sup>2</sup>
  - Ground Floor: 75.9m<sup>2</sup>
  - Lower Ground Floor: 52.7m<sup>2</sup>
  - Basement Floor: 43.8m<sup>2</sup>
- Courtyard Area: 21.1m<sup>2</sup>
- 2 car space

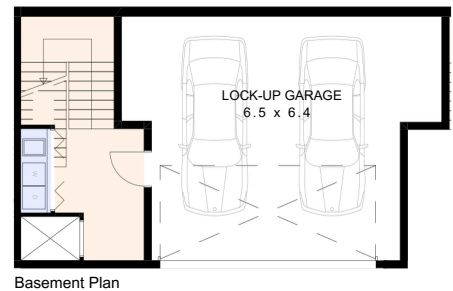
## Floor Plan | Unit 3



First Floor Plan



Ground Floor Plan

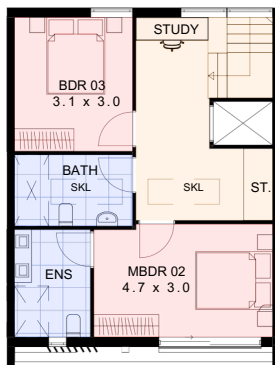


Basement Plan

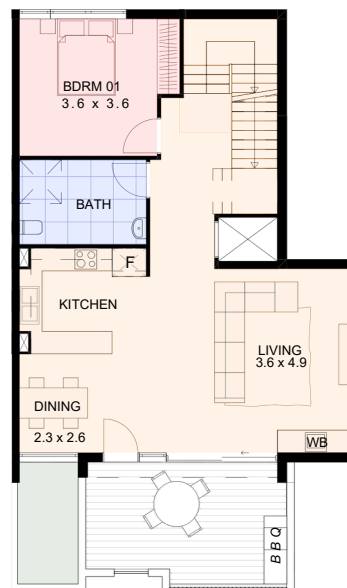
### Floor Plan Unit 03:

- 3 bedroom
- Unit Area: 195.8m<sup>2</sup>
  - Ground Floor: 76.4m<sup>2</sup>
  - First Floor: 52.0m<sup>2</sup>
  - Basement Floor: 67.4m<sup>2</sup>
- Courtyard Area: 21.0m<sup>2</sup>
- 2 car space

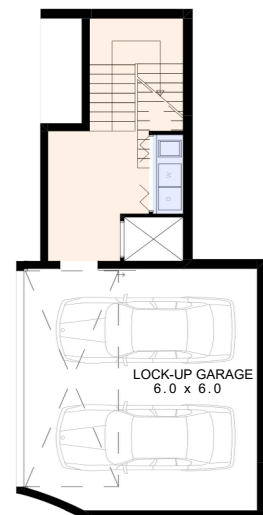
## Floor Plan | Unit 4



First Floor Plan



Ground Floor Plan



Basement Plan

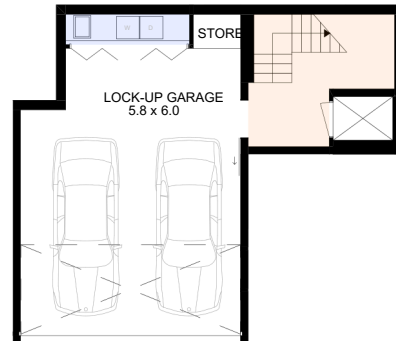
### Floor Plan Unit 04:

- 3 bedroom
- Unit Area: 196.1m<sup>2</sup>
  - Ground Floor: 85.5m<sup>2</sup>
  - First Floor: 52.0m<sup>2</sup>
  - Basement Floor: 58.6m<sup>2</sup>
- Courtyard Area: 22.1m<sup>2</sup>
- 2 car space

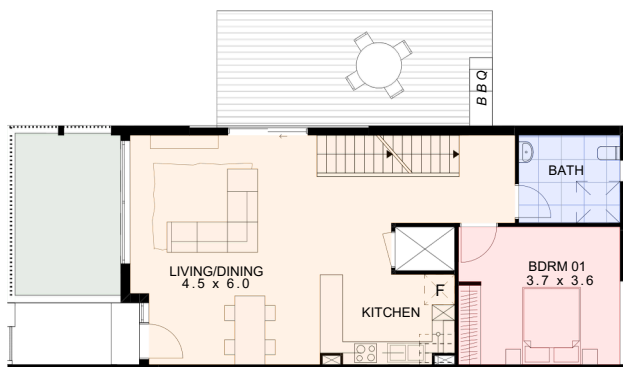
## Floor Plan | Unit 5



First Floor Plan



Basement Plan

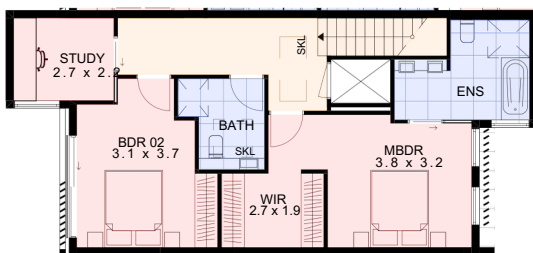


Ground Floor Plan

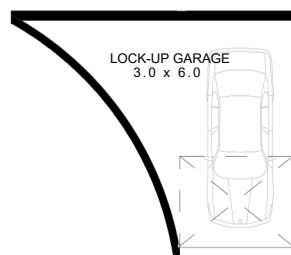
### Floor Plan Unit 05:

- 3 bedroom
- Unit Area: 199.8m<sup>2</sup>
  - Ground Floor: 71.3m<sup>2</sup>
  - First Floor: 67.9m<sup>2</sup>
  - Basement Floor: 60.6m<sup>2</sup>
- Courtyard Area: 40.4m<sup>2</sup>
- 2 car space

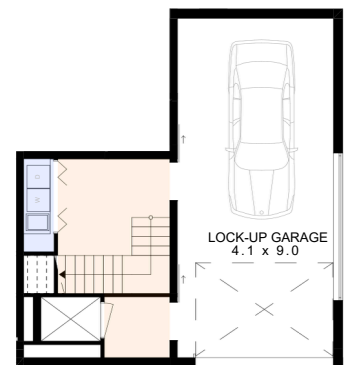
## Floor Plan | Unit 6



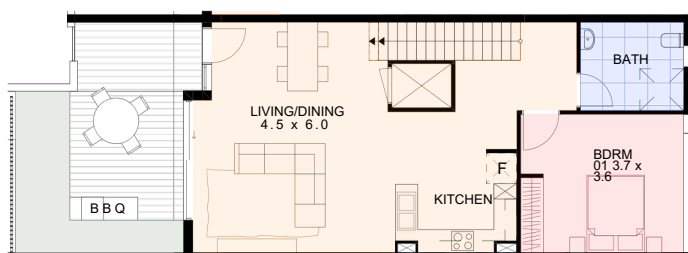
First Floor Plan



Basement Plan



Basement Plan

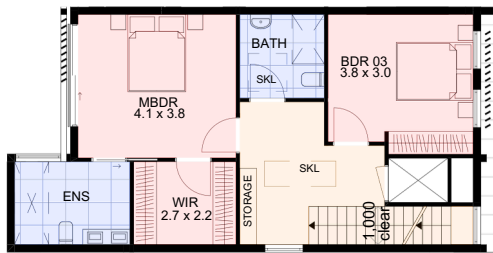


Ground Floor Plan

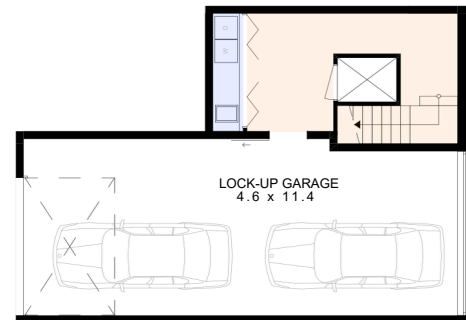
### Floor Plan Unit 06:

- 3 bedroom
- Unit Area: 224.6m<sup>2</sup>
  - Ground Floor: 75.2m<sup>2</sup>
  - First Floor: 64.7m<sup>2</sup>
  - Basement Floor: 84.7m<sup>2</sup>
- Courtyard Area: 25.1m<sup>2</sup>
- 2 car space

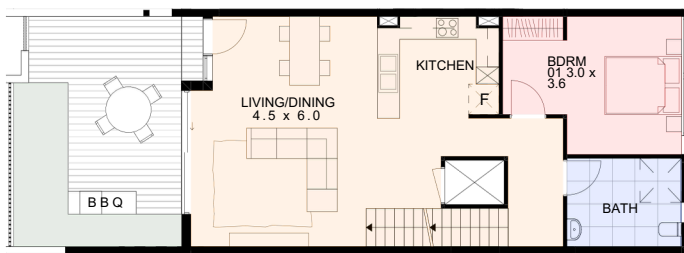
## Floor Plan | Unit 7



First Floor Plan



Basement Plan



Ground Floor Plan

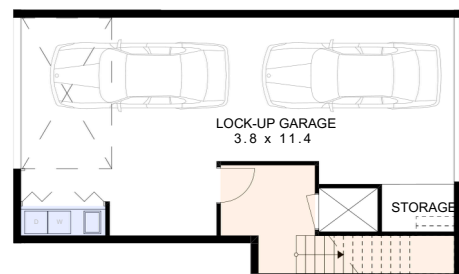
### Floor Plan Unit 07:

- 3 bedroom
- Unit Area: 209.5m<sup>2</sup>
  - Ground Floor: 75.4m<sup>2</sup>
  - First Floor: 59.4m<sup>2</sup>
  - Basement Floor: 74.7m<sup>2</sup>
- Courtyard Area: 27.2m<sup>2</sup>
- 2 car space

## Floor Plan | Unit 8



Ground Floor Plan

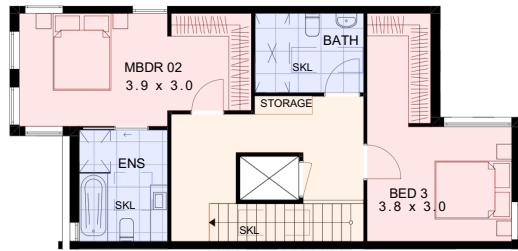


Basement Plan

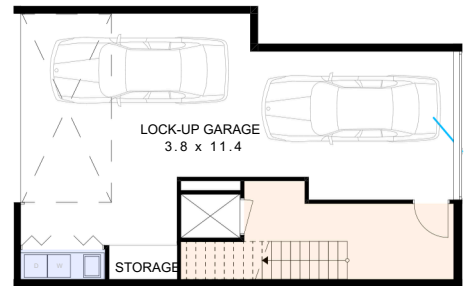
### Floor Plan Unit 08:

- 3 bedroom
- Unit Area: 199.1m<sup>2</sup>
  - Ground Floor: 128.0m<sup>2</sup>
  - Basement Floor: 71.1m<sup>2</sup>
- Courtyard Area: 34.6m<sup>2</sup>
- 2 car space

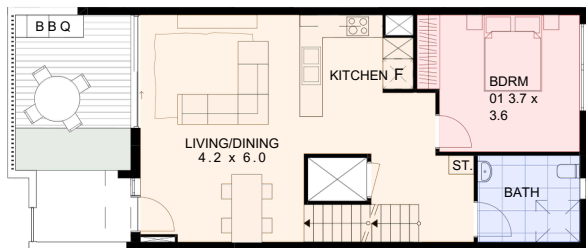
## Floor Plan | Unit 9



First Floor Plan



Basement Plan

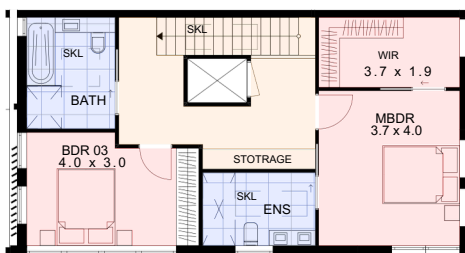


Ground Floor Plan

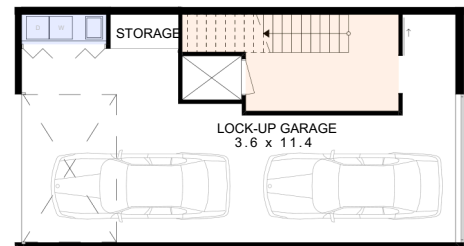
### Floor Plan Unit 09:

- 3 bedroom
- Unit Area: 203.9m<sup>2</sup>
  - Ground Floor: 68.3m<sup>2</sup>
  - First Floor: 60.6m<sup>2</sup>
  - Basement Floor: 75.0m<sup>2</sup>
- Courtyard Area: 17.3m<sup>2</sup>
- 2 car space

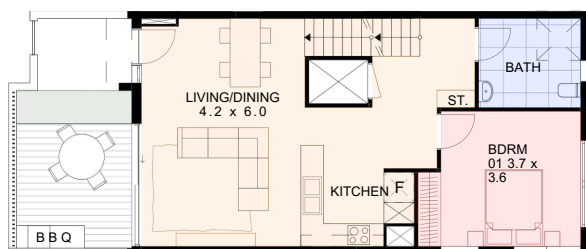
## Floor Plan | Unit 10



First Floor Plan



Basement Plan



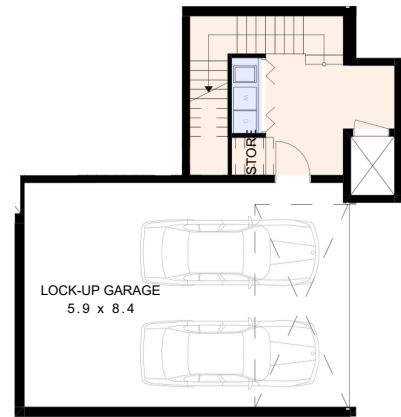
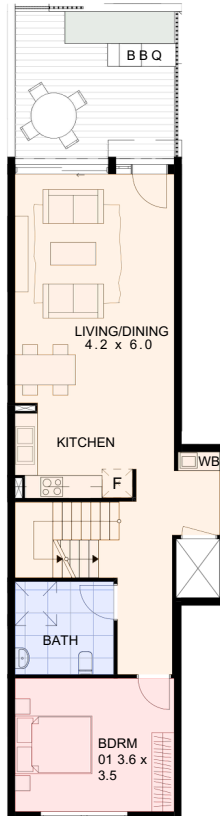
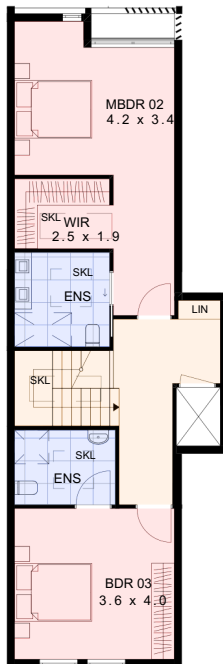
Ground Floor Plan

### Floor Plan Unit 10:

- 3 bedroom
- Unit Area: 199.8m<sup>2</sup>
  - Ground Floor: 68.4m<sup>2</sup>
  - First Floor: 62.3m<sup>2</sup>
  - Basement Floor: 69.1m<sup>2</sup>
- Courtyard Area: 17.5m<sup>2</sup>
- 2 car space



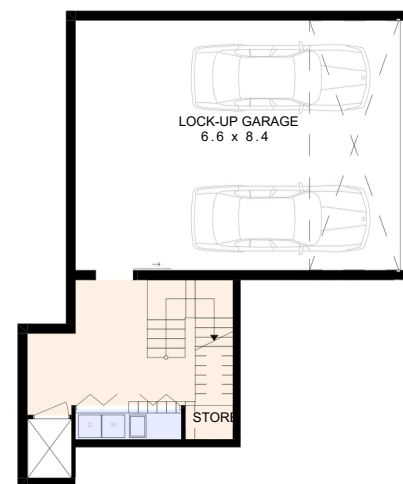
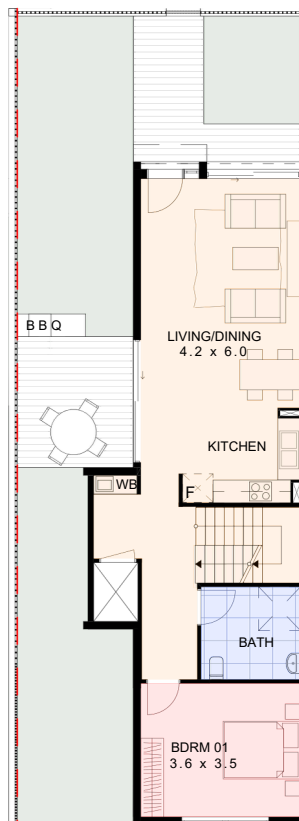
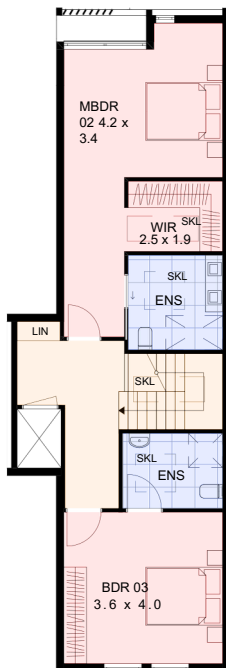
## Floor Plan | Unit 11



### Floor Plan Unit 11:

- 3 bedroom
- Unit Area: 212.5m<sup>2</sup>
  - Ground Floor: 72.8m<sup>2</sup>
  - First Floor: 66.5m<sup>2</sup>
  - Basement Floor: 73.2m<sup>2</sup>
- Courtyard Area: 17.0m<sup>2</sup>
- 2 car space

## Floor Plan | Unit 12



### Floor Plan Unit 12:

- 3 bedroom
- Unit Area: 219.7m<sup>2</sup>
  - Ground Floor: 73.5m<sup>2</sup>
  - First Floor: 66.7m<sup>2</sup>
  - Basement Floor: 79.5m<sup>2</sup>
- Courtyard Area: 54.3m<sup>2</sup>
- 2 car space



**Daniel Cook**  
**Principal**

**0404 483 651**

**[danielcook@mcgrath.com.au](mailto:danielcook@mcgrath.com.au)**

**McGrath**